



PRE-PRESS
REQUIREMENTS
FOR SUPPLYING
ELECTRONIC ART

EDITION:

DIGITAL PRINTING



DIGITAL PRINTING

MAC PLATFORM SOFTWARE PROGRAMS



Adobe Illustrator Only (.ai)
(UP TO CS CLOUD)



Adobe Photoshop (.psd)*
(UP TO CS CLOUD)

EMBEDDED & LINKED IMAGES ONLY

*We are unable to accept files built in programs other than Illustrator. Examples of other programs would be InDesign, Photoshop, Affinity, etc.

GUIDELINES FOR FONTS

All text must be



- Built in Adobe Illustrator
- Converted to outlines

FILE SUBMISSION

All art must be submitted on the provided template. Please note that additional reviews resulting from the resubmission of artwork files may result in an additional charge of \$50 per review.



Please follow the instructions provided on our digital site for submitting artwork.

<http://www.pbinow.com/digital/>

FILE INFORMATION



Color Information

Artwork will be printed in CMYK and White. Convert all Pantone colors to their CMYK equivalents prior to artwork submission.

If Pantone colors are not converted to CMYK equivalent, colors will be converted to CMYK prior to printing.

NOTE: For digital print projects, art will be printed 'as is' from the customer supplied template. Colors will be generated by the digital process and may not match what is seen on a computer screen and/ or on a paper print out due to the nature of digital projects.

Discoloration of printed colors will be noticeable on Kraft/White Paper projects. This will occur along the seals of the bags where the heat sealer touches the ink. Ask your sales rep for more information.



White Layer

In order to improve color accuracy, a white ink layer will be placed between the printed design and the bag substrate. If your bag includes a registered white ink base, please designate a separate white layer within your files to indicate where you would like to place the white ink base. This is important if your design includes a transparent window area for clear structures. Designating the white base placement is also important if you would like inks to print with a metallic appearance from the foil substrate backing it (see example of a white layer below).



2mm Cut Back

Images, patterns & artwork cannot extend the full width of any template, for this a 2mm cut back will be added. Solid uninterrupted colors only may extend to the edges of the design.



Window

Available for clear substrates only. If the design has a window, indicate the area with the words "window area" and a light blue color (ex: cyan @ 20%) on a separate layer.



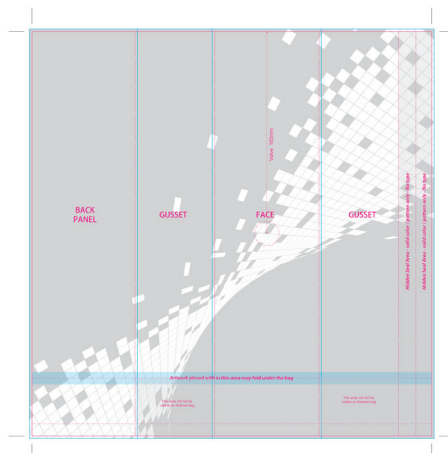
Illustrator PDF?

In Illustrator, please do not "Export" as a PDF. Please "Save As" an Illustrator PDF to preserve all layers and editing functions



Resolution

All images must be 350 dpi or greater.



Gray areas will print in white ink.

White areas will show the foil substrate.



ART FILE CHECKLIST

- ☐ Files are built in Illustrator?
- ☐ Are the fonts turned to outlines?
- ☐ Are all the links included and images embedded?
 - ☐ Image 350dpi or greater?
- ☐ Are all the PANTONE® Colors referenced in the color palette?
- ☐ Is the valve placement on the design? *(if applicable)*

NOTE: The valve needs to be centered left to right on the front or back of the design.
- ☐ Is the tin tie on on the design? *(if applicable)*
 - ☐ Is the color of tin tie indicated on the design?

NOTE: the TBF Standard tin tie placement is 25mm on the back of the bag.
- ☐ Is the matte layer included on a separate layer? *(if applicable)*
- ☐ Is the white layer included on a separate layer? *(if applicable)*

